

799H000085 *Drewholme*

LOGIC-PP

Reg: HOCANM14213339 / DOB: 12/21/2021 / ET BW POS A1A2 BB CDF CVF VRF BYF BLF DPF CNF / aAa: 423615

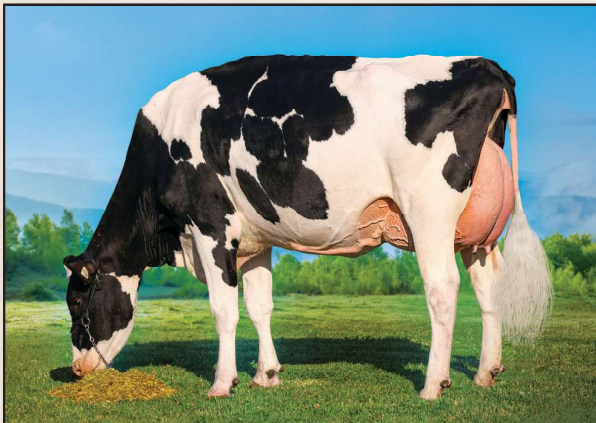
SIRE
VOGUE A2P2-PP

DAM
DREWHOLME LAMBDA LEYSURE P EX-92 6*
sired by Farnear Delta-Lambda
05-03 2x 305 d 13,293 Kg M 5.1%F 3.7%P

2ND DAM
DREWHOLME ZIPIT LEYSURE P EX-90 3*
sired by OCD Eraser Zipit-P
04-02 3x 305 d 15,656 Kg M 4.5%F 3.4%P

3RD DAM
DREWHOLME SUPERSHOT LEYSURE EX-92-5E 5*
07-00 3x 305 d 18,048 Kg M 4.9%F 3.5%P

4TH - 13TH DAMS
VG-85-3YR 4* X VG-87 X VG-85-2YR X EX-90 10*
X Idee Lustre EX-95-3E 10* - Grand Champion RWF 2002
X EX-92 19* DOM X VG-85-3YR X VG-88-3YR 2* X VG-87 3*
X EX-90 8* X VG-85 5*



DREWHOLME LAMBDA LEYSURE P EX-92 6*
Reserve All-Canadian Summer Junior 2-Yr- Old 2021
Dam



DAUGHTER DREWHOLME LOGIC BE STILL-VG-86-2YR
Bred & owned by Drewholme Holsteins

CANADIAN FIGURES						
Lifetime Performance		Rel 84%	Dtrs/ Herds	45/23	Functional Traits	
GPA LPI	+3690	Feed Efficiency	103	Daughter Fertility	95	
PRO \$	\$2088	Herd Life	105	Milking Speed	101	
Production	Rel 86%	Mastitis Resistance	102	Milking Temperament	104	
Milk	77 kgs	Metabolic Disease	104	Calving Ability	98	
Fat	94 kgs +0.77%	Hoof Health	96	Dtr Calving Ability	101	
Protein	39 kgs +0.29%	Lactation Persistence	104	Body Condition	100	

Proof Date: Apr 2026		Type	Reliability: 84%	Dtrs/Herds: 12/9	Data supplied by CDN	
Conformation	13	Poor				Excellent
Mammary	9	Poor				Excellent
Feet & Legs	10	Poor				Excellent
Dairy Strength	6	Poor				Excellent
Rump	12	Poor				Excellent
Udder Floor	1T	Tilt				Reverse
Udder Depth	2S	Deep				Shallow
Udder Texture	1	Fleshy				Soft
Median Suspensory	3	Weak				Strong
Fore Attachment	8	Weak				Strong
Front Teat Placement	2W	Wide				Close
Rear Attachment Height	9	Low				High
Rear Attachment Width	10	Narrow				Wide
Rear Teat Placement	1C	Wide				Close
Teat Length	0	Short				Long
Foot Angle	5	Low				Steep
Heel Depth	9	Shallow				Deep
Bone Quality	-3	Coarse				Flat
Rear Legs Side View	7S	Straight				Curved
Rear Legs Rear View	6	Hocked-in				Straight
Front Leg View	1S	Knock-kneed				Straight
Locomotion	4	Non-mobile				Mobile
Stature	1T	Short				Tall
Height at Front End	-1	Low				High
Chest Width	1	Narrow				Wide
Body Depth	2	Shallow				Deep
Rib Structure	5	Non-angular				Angular
Loin Strength	9	Weak				Strong
Rump Angle	11L	High				Low
Pin Width	7	Narrow				Wide
Thurl Placement	10A	Back				Ahead

AMERICAN FIGURES					
Lifetime Performance		Functional Traits			
GTPI	+2872	Somatic Cell Score	2.90	Cow Conception Rate	-1.2
NET MERIT	\$334	Productive Life	0.2	Daughter Preg Rate	-2.1
Production	Rel 90%	Daughter / Herds	37/5	Sire Calving Ease	1.7%
Milk	-239 lbs	Combined F&P	78 lbs	Dtr Calving Ease	1.7%
Fat	64 lbs +0.28%	Cheese Merit	\$366	Sire Stillbirth	3.9%
Protein	14 lbs +0.08%	Fertility Index	-1.77	Dtr Stillbirth	4.8%

Proof Date: Apr 2026		Type	Reliability: 81%	Dtrs/Herds: 0/0	Data supplied by Holstein USA	
PTAT	1.83	Poor				Excellent
UDC	1.40	Poor				Excellent
FLC	0.95	Poor				Excellent
BSC	0.10	Poor				Excellent
Stature	0.91	Short				Tall
Strength	0.37	Weak				Strong
Body Depth	0.77	Shallow				Deep
Dairy Form	1.24	Coarse				Open Rib
Rump Angle	1.76	High				Sloped
Thurl Width	0.84	Narrow				Wide
Rear Legs-Side	-1.03	Straight				Sickle
Rear Legs-Rear	1.21	Sickle				Straight
Foot Angle	1.05	Low				Steep
Feet & Legs Score	1.07	Low				High
F. Udder Attachment	1.47	Weak				Strong
Rear Udder Height	2.34	Low				High
Rear Udder Width	2.23	Narrow				Wide
Udder Cleft	0.63	Weak				Strong
Udder Depth	0.68	Deep				Shallow
Front Teat Placement	0.00	Apart				Close
Rear Teat Placement	0.33	Apart				Close
Teat Length	0.14	Short				Long